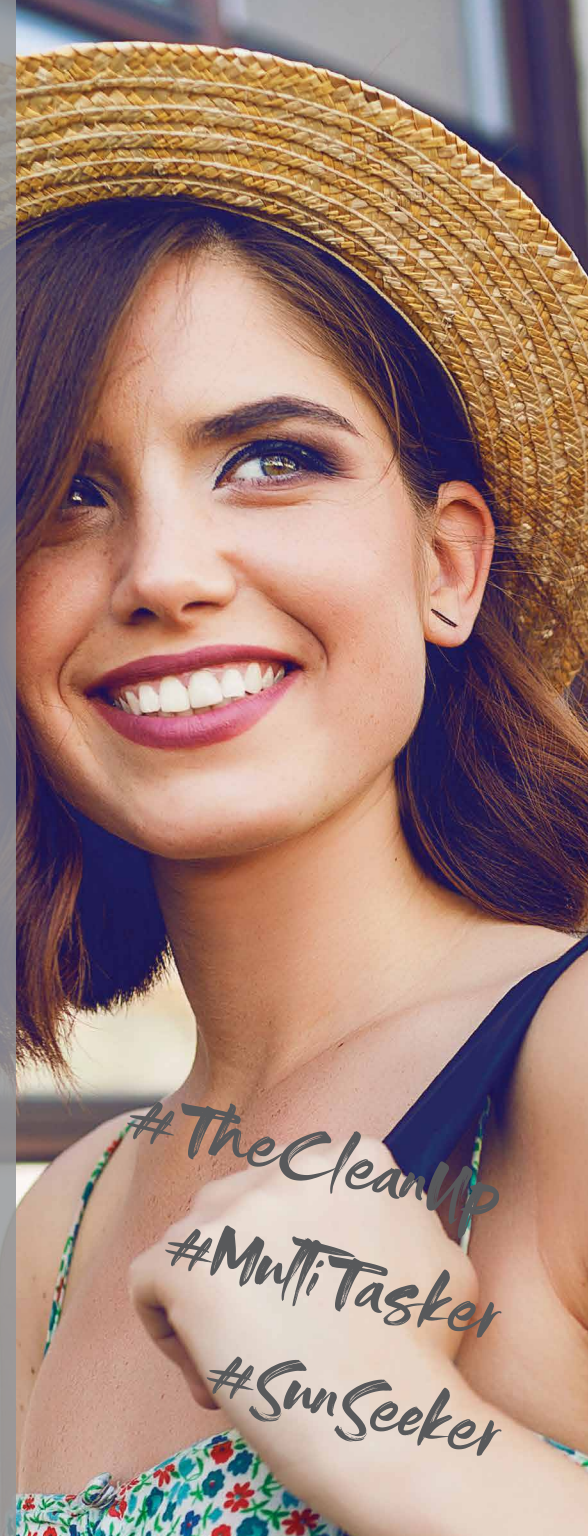


# Unveil SPF 30 Color Corrector

SH-01-58-08

Color correcting cream to mask imperfections, even skin tone, and protect skin from UV damage.



## Unveil SPF 30 Color Corrector

SH-01-58-08



Ingredients	INCI Nomenclature	Suppliers	% w / w
<b>A</b> Evicare® solve Labrafac® CC MB Magnesium Stearate	Triheptanoin	Evident Ingredients	4.00
	Caprylic/Capric Triglyceride	Gattefossé	4.00
	Magnesium Stearate	---	2.00
<b>B</b> Zano® 20 Plus Evicare® solve Labrafac® CC MB Dispersun DSP-OL 100	Zinc Oxide, Triethoxycaprylylsilane	EverCare	20.00
	Triheptanoin	Evident Ingredients	6.00
	Caprylic/Capric Triglyceride	Gattefossé	6.00
	Polyhydroxystearic Acid	Innospec Performance Chemicals	0.60
<b>C</b> Emulium® Illustro  Natrallipid® Abyssinian	Polyglyceryl-6 Polyhydroxystearate, Polyglyceryl-6 Polyricinoleate, Polyglycerin-6	Gattefossé	5.00
	Crambe Abyssinica Seed Oil	Nature's Crops International	4.00
<b>D</b> DI-Water Evicare® aquatex 80 Propanediol Evidice® PEHG Magnesium Sulfate	Water (Aqua)	---	qs
	Xanthan Gum	Evident Ingredients	0.21
	Propanediol	---	3.00
	Phenoxyethanol, Ethylhexylglycerin	Evident Ingredients	1.00
<b>E</b> Featheleve PTM-7001D Fine Gold Featheleve PT-7901K Real Pearl Green	Titanium Dioxide, Tin Oxide, Silica	CQV Co., Ltd.	1.50
	Titanium Dioxide, Tin Oxide, Silica	CQV Co., Ltd.	3.00

100.00

### Procedure

1. Combine Phase A and heat to 95°C. Mix well until homogeneous.
2. Combine Phase B and heat to 60°C. Homogenize until all powders are completely dissolved.
3. Mix Phase A, B & C together. Blend until homogeneous. Ensure temperature is 60°C.
4. Prepare Phase D by adding water and begin mixing and heating to 60°C. Pre-mix Evicare® aquatex 80 and Propanediol until uniform. Add pre-mix to water and mix for 10 minutes until homogeneous. Add remaining ingredients and mix until uniform.
5. Under rapid mixing (rotor stator 3000 RPM) add Phase D to Phase ABC. Mix for 10 minutes until homogeneous.
6. Reduce speed to 1000 RPM and add Phase E. Mix until cooled to 40°C.

### How To Use

After moisturizing, evenly apply a moderate amount to the face. Cream will transition to a light beige to even out skin tone.

### Stability Tested

**3 months** 5°C, room temperature, 45°C

**Freeze/Thaw** 3 cycles

### Physical Data

**Appearance** Opaque, beige emulsion

**pH** N/A

**Viscosity** 300,000-600,000 cPs  
Brookfield DV-II (RT; 24 hours;  
RV T-B (92) @ 0.5 rpm)



Omya Specialty Materials Inc.  
5150 E. Pacific Coast Hwy, Suite 600  
Long Beach, CA 90804  
(877) 457-7266 | PersonalCareUS@omya.com

Innovation Comes Naturally™

Scan To Learn More

